

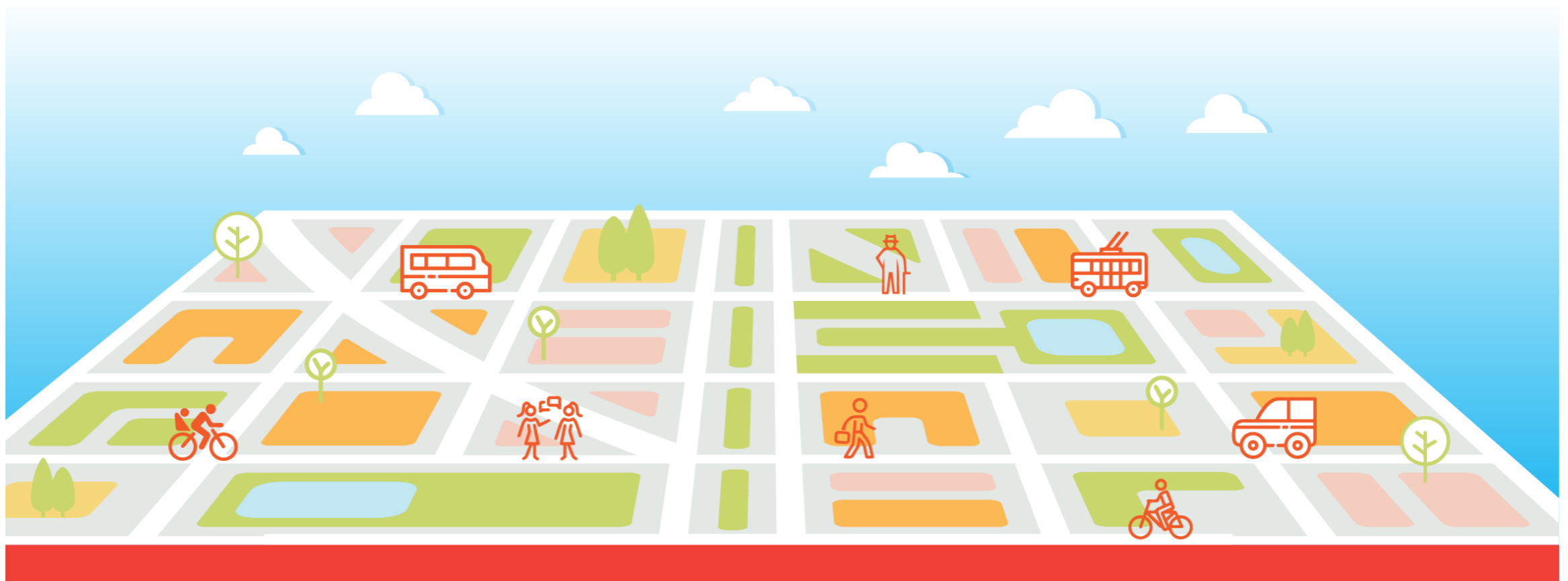


SUNRISE

*Sustainable Urban Neighbourhoods
Research and Implementation
Support in Europe*

Co-creating communities in CIVITAS SUNRISE

Laying the foundation for sustainable neighbourhood mobility planning



This project has received funding from the European Union's Horizon 2020 research and innovation programme under grant agreement No 723365

Version:

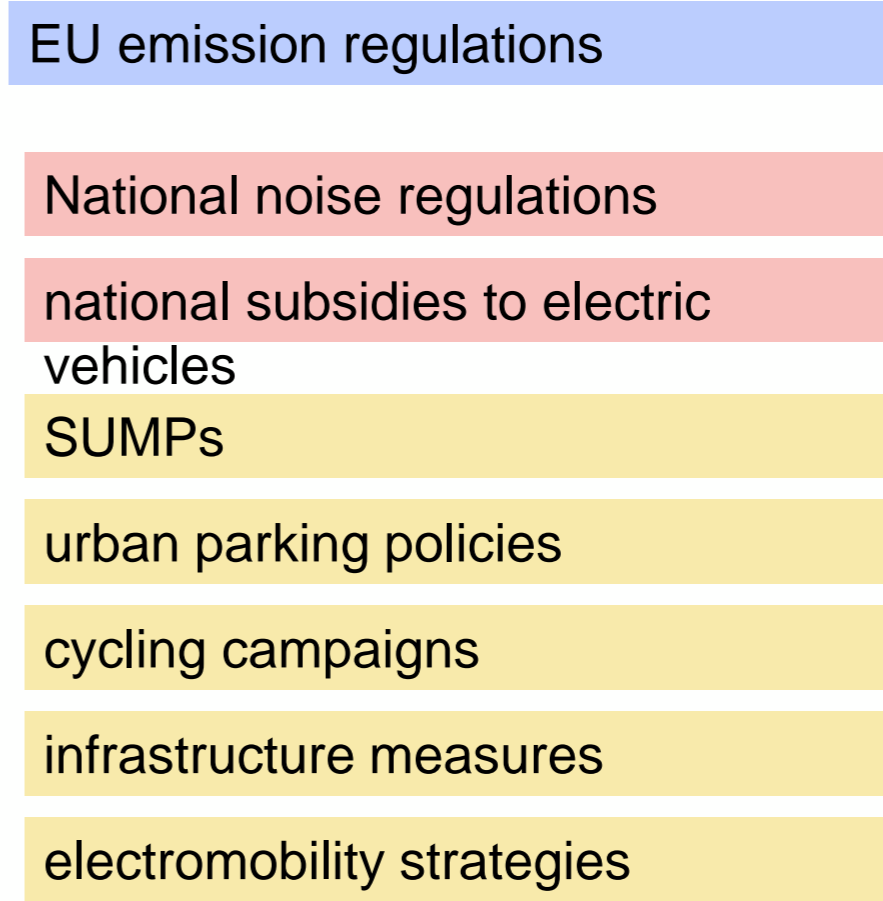
Date:

Author:

Urban mobility measures are typically...



- top down - driven by city government or regional/national regulations
- at city-level



- little involvement of the affected groups - measures are imposed
- expert- / politically driven
- tax-funded
- address higher-level challenges, not necessarily local issues



or...

- bottom-up driven by individuals, businesses, NGOs
- often fueled by individual or local challenges or business interests



Peer-to-peer car-sharing & ride sharing

Shop owner initiatives, e.g. cycle parking, discounts

Individuals take own initiatives – cycle to work etc.

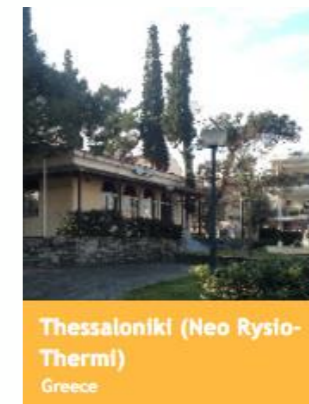
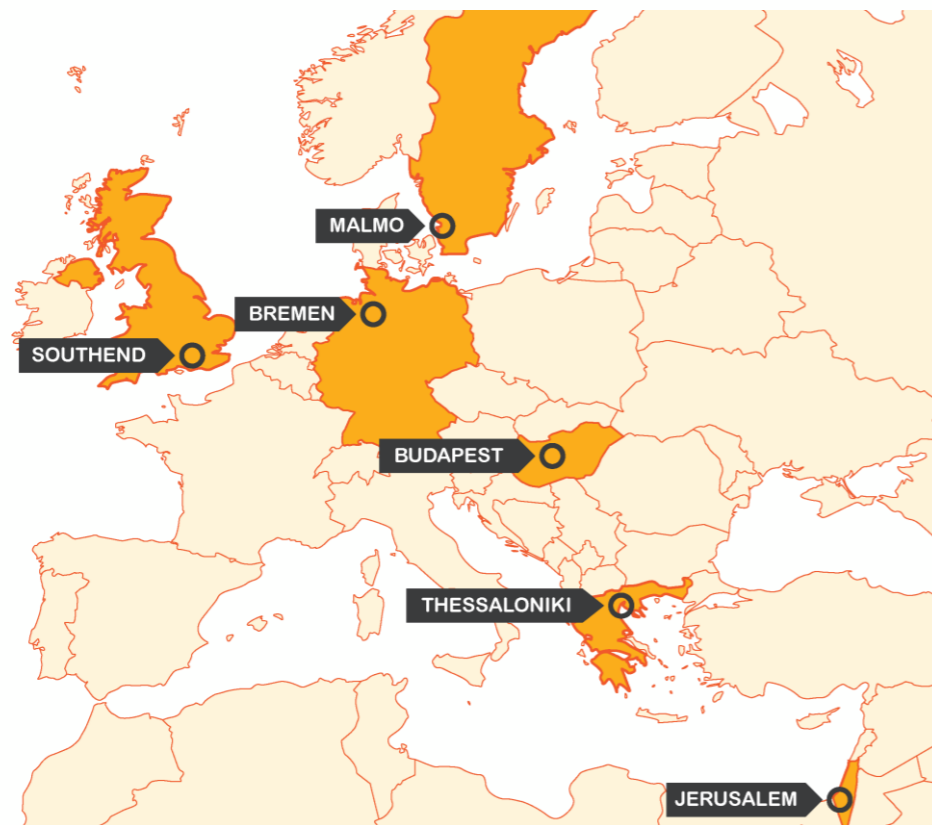
Local cooperation – walking school-bus etc.

Property-owners improve cycle parking facilities

- relies on volunteer actions or business initiatives and investments
- addresses individual-level or local level challenges, not necessarily urban or global ones
- no formalised power behind the measures, cannot easily be scaled
- can mobilise private investments



Six neighbourhoods with similar but also different challenges



- street space - parking
- traffic situation around schools
- accessibility for all groups
- traffic safety
- attractiveness
- cycling infrastructure - quality, safety
- traffic noise
- walkability
- freight transport
- etc.



Can the neighbourhood-level offer additional possibilities to identify, develop and/or implement mobility measures?



- In-between city and individual levels
- Geographical closeness - local problems, common problem-understanding
- Social cohesion, people know each other, possibility to influence one's living conditions; potentially easier to build trust
- Possibility to mobilise local residents but also businesses



Not a substitute for city government responsibilities or measures





SUNRISE

Activities along the entire innovation chain

Co-identification
of mobility
problems

Co-development
of solutions

Co-
implementation
of measures

Co-evaluation

Learning and knowledge transfer

with special attention paid to ensure:

- Inclusive representation of society
- Bringing in new stakeholders



Form - co-creation forum

- Form to initiate and administer the local process
- City representatives and local stakeholders, moderated meetings
- Supported by process-professionals and urban mobility professionals
- Agree upon problems to attack, discuss solutions
- Not prescriptive, but examples of solutions used elsewhere are shown.



Step 1: Co-identification

- Identify local mobility issues that are relevant to local residents and stakeholders
- Are there challenges that the locals, stakeholder and the city agree upon?
- Create common problem understanding - before working on solutions



**Meetings with
invited
stakeholders**



Onsite and online problem gathering on maps



Local press drawing interest in participation



Projektkoordinatorin Susanne Fiedler und Praktikantin Stefanie Harms markieren auf einer großen Karte Probleme und Anregungen von Bürgern der Wohnquartiere rund um das Gelände des Klinikums Bremen-Mitte. Foto: Schlie

Straßengespräche gestartet

Behörde sammelt im Dialog mit Bürgern Anregungen für nachhaltige Verkehrskonzepte

ROBERT L. DÄNSEN

Örtlicher Vortragsort: Die erste Bürgerin stand schon bereit, als Susanne Fiedler und Stefanie Harms von der Bremer Verkehrsbetriebe nach dabei waren, ihren Meinen Ist-Stand für das erste Straßengespräch aufzuheben. Kaum war die Karte vom Neuen Hülberg ausgelegt, klopfen die ersten bunten Punkte für auf ihre nächsten Probleme, die Gassen stehen für Ideen und die Grünen für gute Beispiele – immer im Licht der Bürger. Die meisten Punkte sind eingekreist – sie markieren Gestaltungswünsche.

Dabei geht es streng genommen gar nicht um das, was mit und auf dem Gelände des Klinikums Bremen-Mitte passiert, sondern eigentlich um die umliegenden Wohngebiete. Konkret um Möglichkeiten zur Erleichterung der Straßen, insbesondere von Anwohner:innen.

„Für die Kinderkiste und das neue Quartier gibt es eigene Maßnahmekonzepte“, erklärt Susanne Fiedler. Sie ist Projektkoordinatorin für nachhaltige Mobilität beim Senator für Umwelt, Bau und Verkehr.

Insgesamt lässt sich die TB das auf vier Jahre angelegte Seminar-Projekt rund um Millionen Euro kosten. Für den Bremer Teil stehen 450.000 Euro zur Verfügung.

„Wir sind noch in der ersten Phase der Bemachbarhaft“, sagt Fiedler. Die Straßengespräche sollen einen Zugang zu den Bürgern haben, um zu erfahren, was sie im Bereich Verkehr mitbringen, aber auch, um ihre Ideen zur Verbesserung der Situation aufzuheben. Gebirgt in dabei alles, was mit Verkehr zu tun hat: von Parkproblemen über Barrierefreiheit bis zu Fragen der Sicherheit und Konflikten zwischen Fußgänger:innen und Radfahrer:innen. Im zweiten Schritt soll es dann um die Entwicklung von konkreten Lösungen gehen.

STRASSENGESPRÄCHE

- Mo., 11.4., 15 - 18 Uhr: Brunnenplatz/die Höhe Straße
- Fr., 13.4., 11 - 14 Uhr: Stemannplatz/die Höhe Straße
- So., 14.4., 9 - 12 Uhr: Am Hülberg, Wilke-Parkhaus/Bremer
- So., 15.4., 12 - 13.30 Uhr: Hansbüschstraße, Friedenskirche
- Mo., 16.4., 15 - 18 Uhr: Nordhäuser Str./Ecke Bremersteige Str.
- Do., 19.4., 9 - 12 Uhr: Finkenbühl-Str./Ecke Graf-Hausen-Str.
- Fr., 27.4., 15 - 18 Uhr: Finkenbühl/Ecke Sachsenstraße
- So., 29.4., 9 - 12 Uhr: Sievert-Hagen-Str./Ecke Graf-Hausen-Str.

Termin- und/oder Standortänderungen sind insbesondere aufgrund der Wetterlage möglich. Aktuelle Änderungen im Internet unter www.bremve.de/wissenswertes



Presence at relevant local events



“Street Chats” to enter into dialogue with street users - meet and ask, in real life!



Neighbourhood festival,
"show us where you'd like a
change"

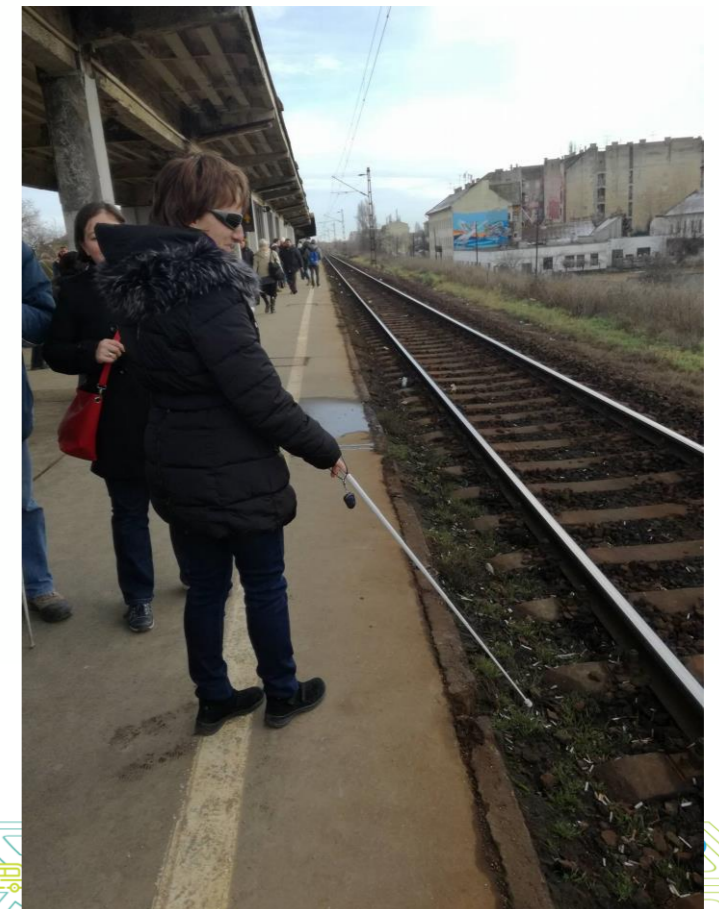
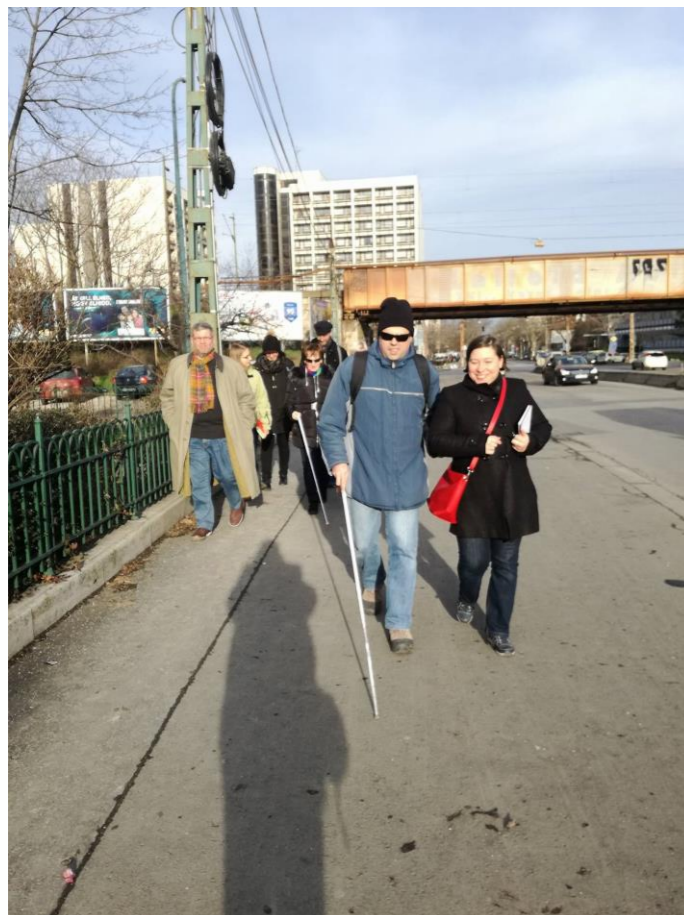


Co-creation Forum as a
platform for discussion, with
local residents and
stakeholders, open invitation



Thematic walks to assess accessibility

- With blind and visually-impaired
- With parents with prams
- With mobility-impaired people





Actively approaching existing social networks, not just the "usual suspects"



Sports clubs

 This project has received funding from the European Union's Horizon 2020 research and innovation programme under grant agreement No 723365



Cultural center

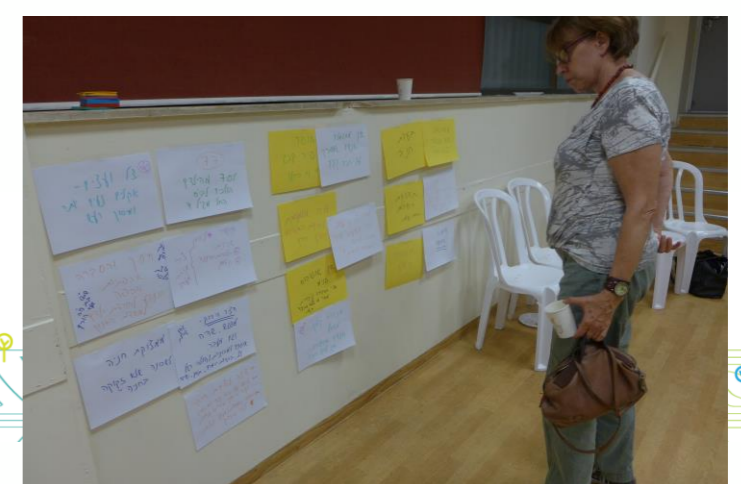
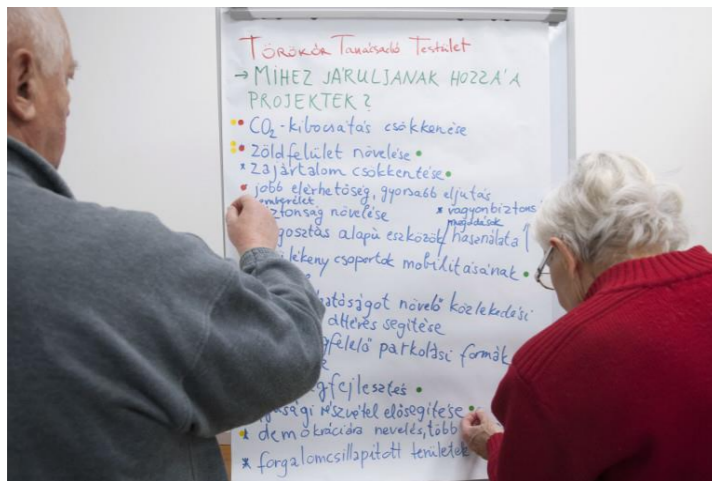


Folklore society



Step 2: Co-development of solutions

- Co-develop and select practical projects to address identified challenges
- Participatory planning method
- Neighbourhood Mobility Action Plan



Experience so far

People are interested and engaged in their local neighbourhoods. Discussions can be heated, old conflicts or privileges can exist.



In the process one needs to:

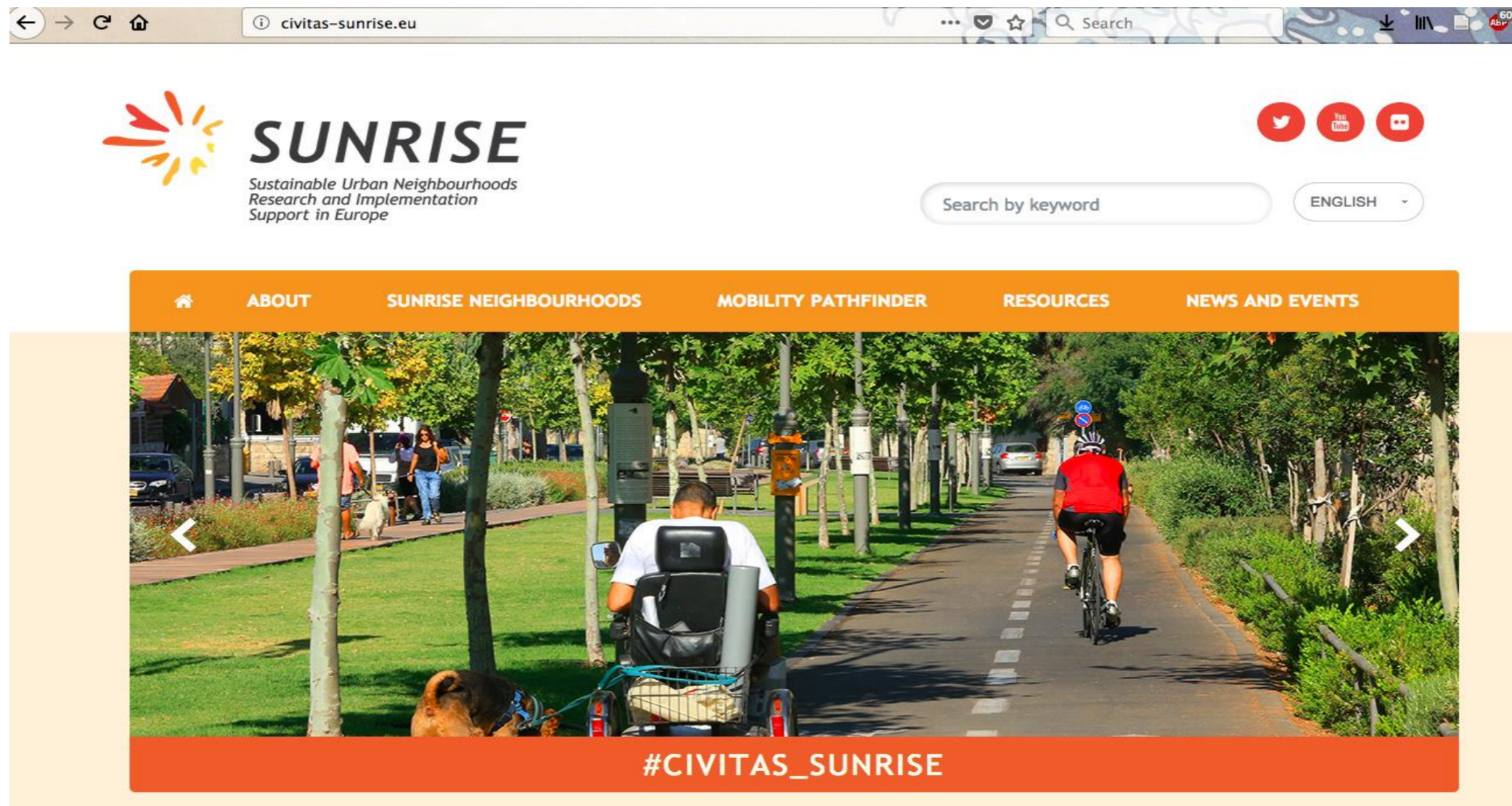
- **Prove to citizens that it is worth participating, their voices will be heard**
- **Know when people are available for participation**
 - Use social media
 - Ask institutions
 - Think about local events
- **Be prepared with a very short, convincing introduction**
 - For a citizen
 - For a stakeholder
- **Thank citizens for their involvement**



Coming soon! Step 3: Co-implementation

Want to know more?

- Visit: civitas-sunrise.eu



Thank you!

Partners



Special thanks to Koucky, Urbanista, Bremen, and Budapest for contributing to slides

