

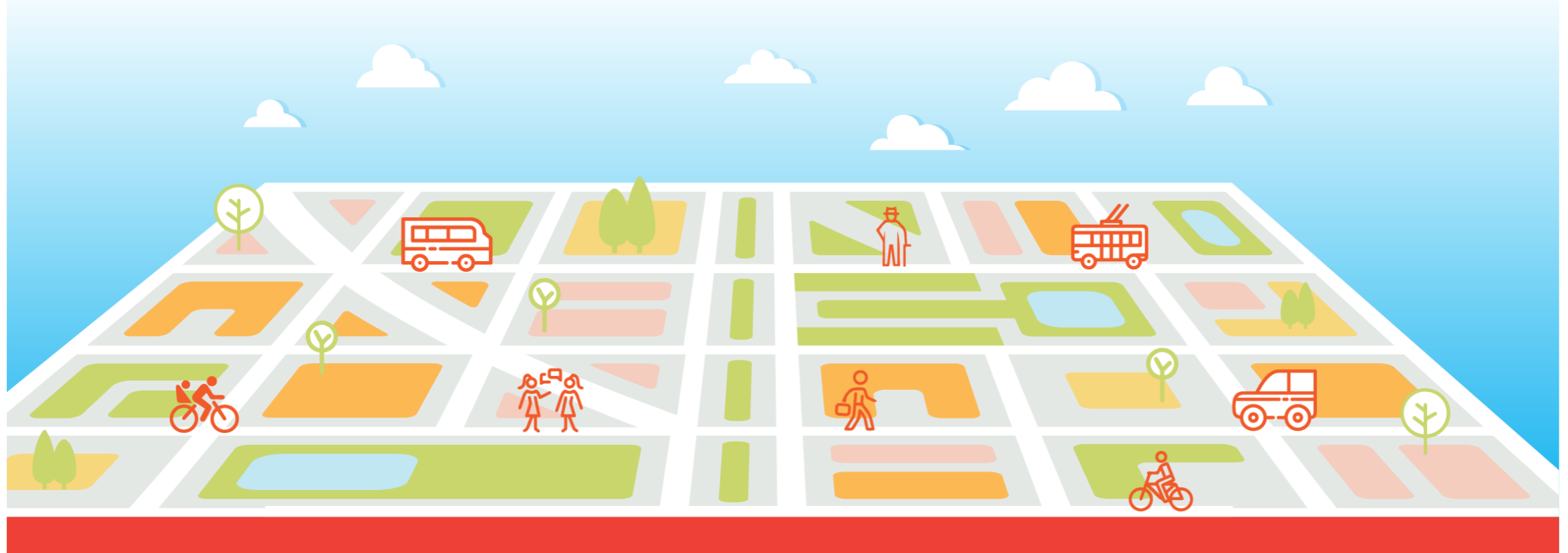


SUNRISE

*Sustainable Urban Neighbourhoods
Research and Implementation
Support in Europe*

CIVITAS SUNRISE

Laying the foundation for sustainable neighbourhood mobility planning

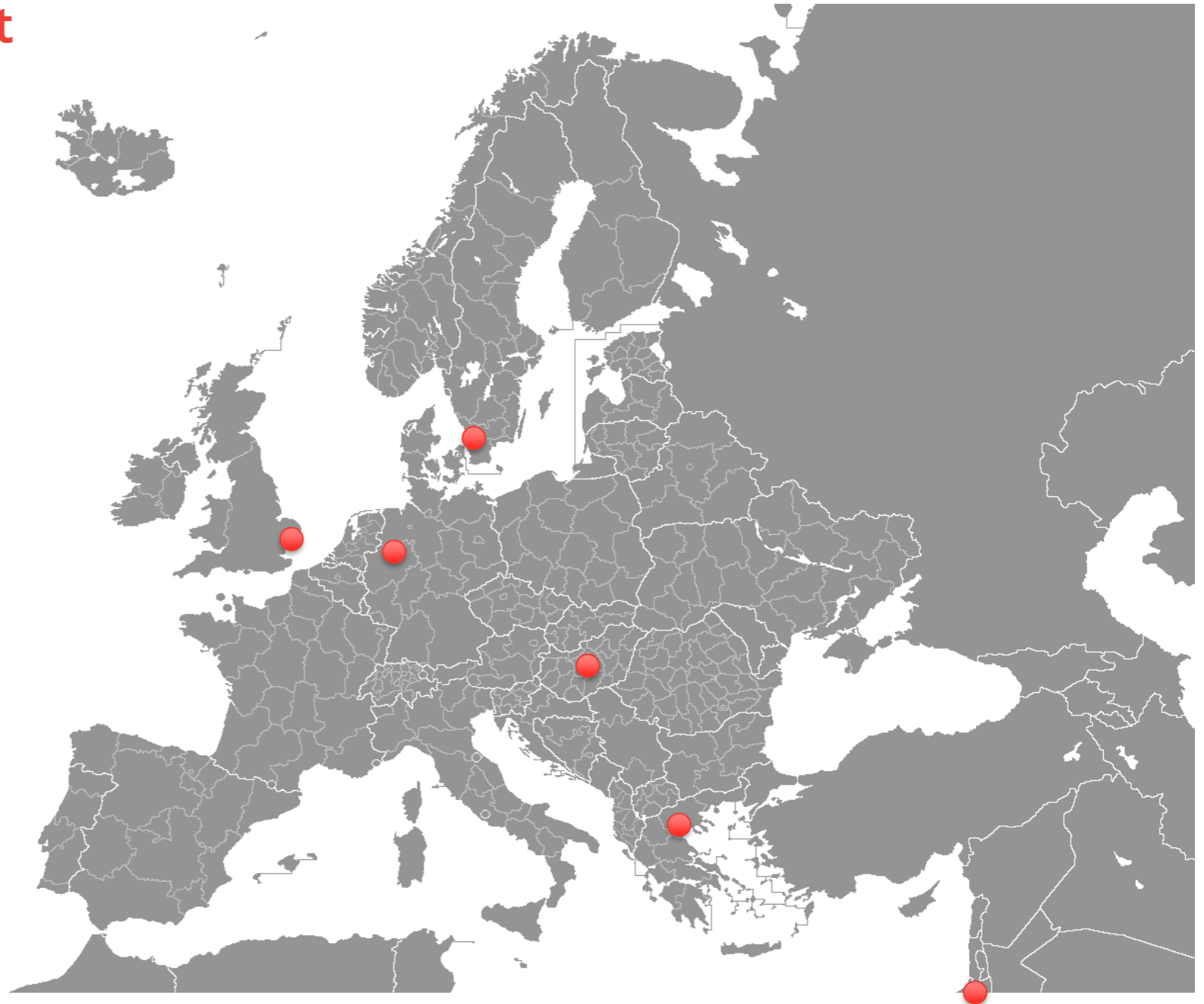


This project has received funding from the European Union's Horizon 2020 research and innovation programme under grant agreement No 723365

Version: 1
Date: 29 September 2017
Author: Hana Peters

Address mobility challenges at the neighbourhood level in six cities across Europe and the Middle East

- Bremen
- Budapest
- Jerusalem
- Malmö
- Southend-on-sea
- Thessaloniki



The neighbourhoods

Key issues

- Congestion
- Severe air and noise pollution
- Busy roads as physical barriers
- Safety issues
- Lack of public spaces and places to sit
- Low levels of public transport service
- High car usage and ownership rate
- Parking problems

A variety of characteristics

- Central and suburban
- Low-income to upper middle class
- Varying employment levels
- Historic and newer areas
- Young population to higher percentage of elderly people
- Ranging from 0.10 to 1.84 km²
- Ranging from 2.000 - 13.000 inhabitants



Activities along the entire innovation chain



with special attention paid to ensure:

- Inclusive representation of society
- Bringing in new stakeholders



Aspirations and expectations

Share **relevant**,
widely **endorsed**,
tangible,
and **replicable** results,
and to
**make transparent the mechanisms that got us
there.**



Thank you!

Partners



Hana Peters
 Rupprecht Consult
h.peters@rupprecht-consult.eu



Budapest



Malmö



Southend-on-sea



Thessaloniki



- Add:
- Responses to worries (maybe in notes, not in slides)
- Worry about getting sufficient participation

